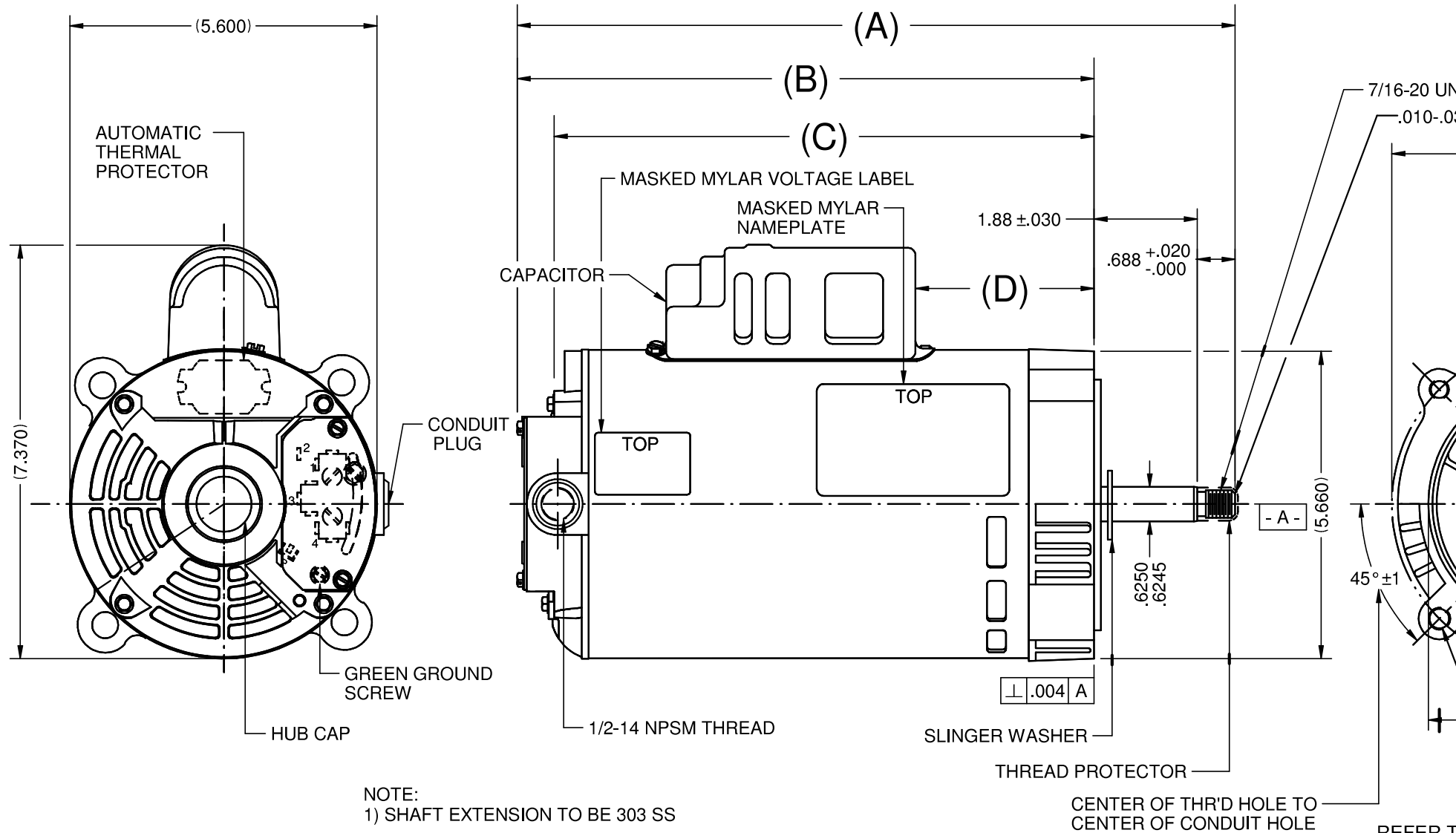




Catalog #: EU1002

Model Number:	C055JZR4770013J
PRODUCT NAME:	1 HP - ODP - 3450
PHASETYPE:	1_CAPACITOR START
MOTOR ENCLOSURE:	ODP
HORSEPOWER:	1
KILOWATTS:	0.8
POLES:	2
NUMBER SPEEDS:	1
RPM:	3450
RPM 2:	2850
HERTZ:	60
HERTZ 2:	50
VOLTS PRIMARY:	115/208-230 & 110/220 V
VOLTS :	115
VOLTS 2:	208
VOLTS 3:	230
VOLTS 4:	110
VOLTS 5:	220
FRME :	56
SHAFT CODE:	J
STATOR DIAMETER:	5.5
STACK:	2.75
MOUNTING:	J-FACE
MOTOR TYPE:	FHP
OPPOSITE END BEARING:	BALL
SHAFT END BEARING:	BALL
AMBIENT:	40
ROTATION:	CW LEAD END
SERVICE FACTOR:	1.4
STARTCAPMFD:	198.45
SHIPPING WEIGHT:	23
THERMAL PROTECTION:	AUTOMATIC RESET
BREAKDOWN TORQUE:	74.36
BREAKDOWN TORQUE UOM:	OZFT
LOCKED ROTOR TORQUE:	33.97
LOCKED ROTOR TORQUE UOM:	OZFT
INSULATION CLASS:	B
KVA CODE LETTER:	L
LOCKED ROTOR AMPS:	62.51
FULL LOAD AMPS PRIMARY:	12.8/6.7-6.4
SERVICE FACTOR AMPS PRIMARY:	15.4/8.5-7.7

VAR	MODEL	CUSTOMER	CAT.NO.	A	B	C	D	HP	VOLTS	SF	AMPS	HZ	RPM	CONN VOLTS	PROT
001	C55JXJZN-4768	COMMERCIAL PUMPS	EU0502	11.67	9.11	8.38	2.9	1/2	115/208-230//110/220-230	1.6/1.0	8.2/4.2-4.1//9.8/4.9-5.2	60/50	3450/2850	115	AUTO
002	C55CXJZP-4769	COMMERCIAL PUMPS	EU0752	12.42	9.86	9.13	2.978	3/4	208-230/115//220-230/110	1.5/1.0	5.4-5.2/10.4//6.0-6.4/12.0	60/50	3450/2850	230	AUTO
003	C55CXJZR-4770	COMMERCIAL PUMPS	EU1002	12.67	10.11	9.38	2.978	1	208-230/115//220-230/110	1.4/1.0	6.7-6.4/12.8//7.4-7.8/14.8	60/50	3450/2850	230	AUTO
004	C55JXKAF-4781	COMMERCIAL PUMPS	EU0332	11.336	8.773	8.126	2.65	1/3	115/208-230//110/220-230	1.75/1.0	6.2/2.9-3.1//7.4/3.7-4.0	60/50	3450/2850	115	AUTO



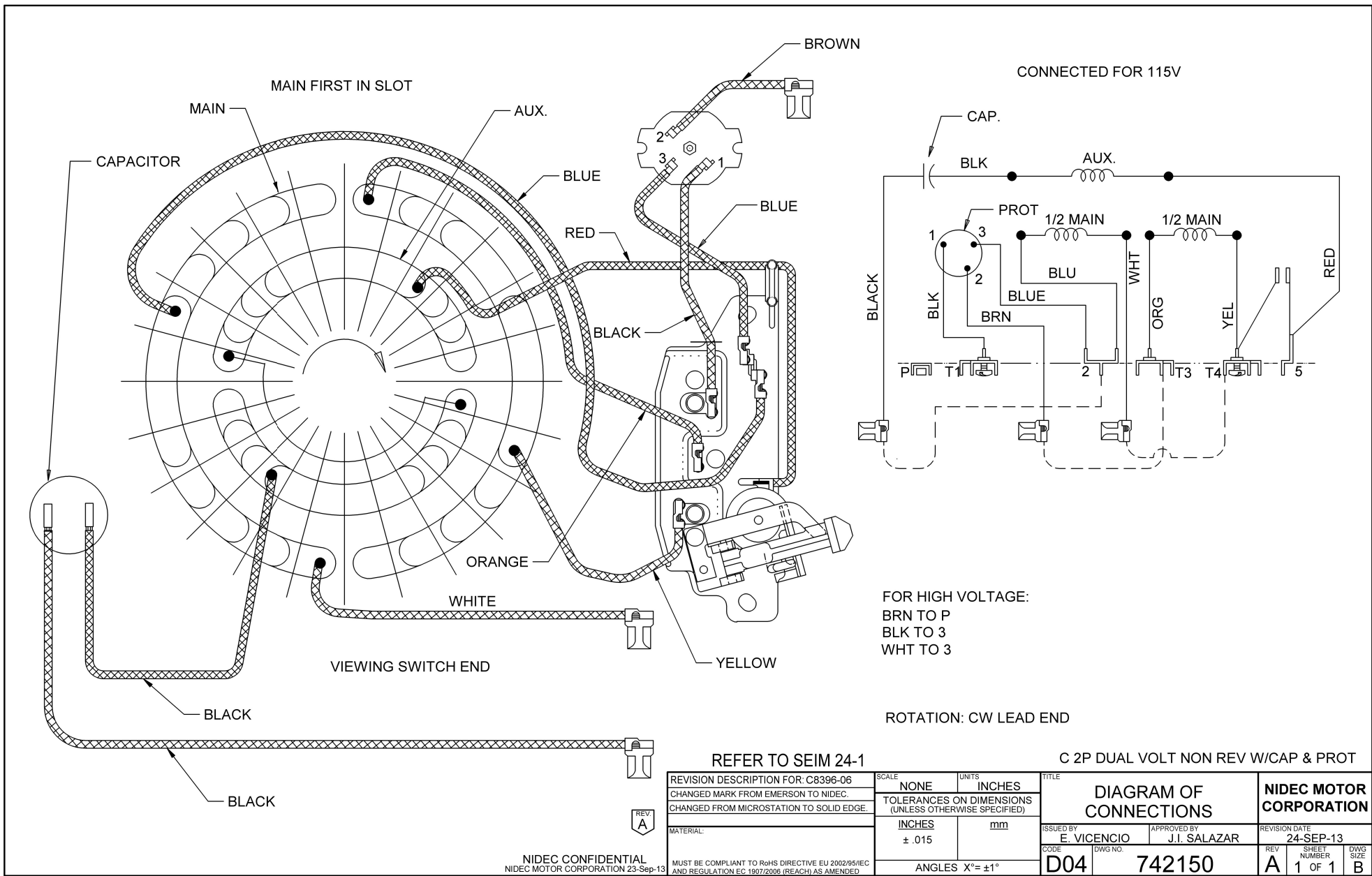
NOTE:
1) SHAFT EXTENSION TO BE 303 SS

NIDEC MOTOR CORPORATION 02-Feb-19

REVISION RECORD FOR: ECO E33608	
CHANGED ROTATION FROM "CCW DRIVE END" TO "CW LEAD END"	
ISSUED BY: J. ALVARADO	ENGINEER APPROVED: H. CHAPARRO

TOLERANCES ON DIMENSIONS (UNLESS OTHERWISE SPECIFIED)	
INCHES .XX = ± .010 .XXX = ± .005	mm
ANGLES X° = ±1°	

NIDEC MOTOR CORPORATION	
INFORMATION DISCLOSED ON THIS DOCUMENT IS CONSIDERED PROPRIETARY AND SHALL NOT BE REPRODUCED OR DISCLOSED WITHOUT WRITTEN CONSENT OF NIDEC MOTOR CORPORATION	
TITLE	CODE
CUSTOMER DETAIL DRAWING	V02



REFER TO SEIM 24-1

C 2P DUAL VOLT NON REV W/CAP & PROT

REVISION DESCRIPTION FOR: C8396-06 CHANGED MARK FROM EMERSON TO NIDEC. CHANGED FROM MICROSTATION TO SOLID EDGE.		SCALE: NONE UNITS: INCHES	TITLE: DIAGRAM OF CONNECTIONS		NIDEC MOTOR CORPORATION
MATERIAL:		TOLERANCES ON DIMENSIONS (UNLESS OTHERWISE SPECIFIED): INCHES: ± .015 mm:	ISSUED BY: E. VICENCIO CODE: D04	APPROVED BY: J.I. SALAZAR DWG NO.: 742150	
NIDEC CONFIDENTIAL NIDEC MOTOR CORPORATION 23-Sep-13		MUST BE COMPLIANT TO RoHS DIRECTIVE EU 2002/95/IEC AND REGULATION EC 1907/2006 (REACH) AS AMENDED		ANGLE: X° = ±1°	

Special Application Commercial Pump Single Phase Open Drip Proof (ODP) C-Face



APPLICATIONS:

For use on chiller, condensate, and other HVAC duty pumps, booster and irrigation pumps, dishwasher and part washer pumps, watering and de-watering pumps, and other commercial duty pumping applications.

FEATURES:

- Double Sealed Ball Bearings - Locked Drive End Bearing
- 50/60 Hertz Motors have 1.0 Service Factor on 50 Hertz
- Class B Insulation
- Continuous Duty
- 40°C Ambient
- F1 Assembly
- Reversible Rotation
- Shaft Threads for 56J Mount: 7/16-20 UNC-2A

HP	RPM	Voltage	Frame	Catalog Number	List	Discount Symbol	Base (Feet)	SF	"C" Dim. (inches)	Ship Wt. (lbs)	Max Amps	Notes
1/4	1200	115	56C	D14B3NCR	\$326	DS-3FMP	No	1.35	10.9	20	6.2	25
1/3	3600	115/208-230	56C	EC0332	\$208	DS-3FMP	No	1.75	10.8	16	8.0/4.2-4.0	24,98
	3600	115/208-230	56C	EC0332B	\$214	DS-3FMP	Rigid	1.75	10.8	17	8.0/4.2-4.0	24,98
	3600	115/208-230	56J	EU0332	\$214	DS-3FMP	No	1.75	11.3	18	8.0/4.2-4.0	24,98
	3600	115/208-230	56J	EU0332B	\$219	DS-CPMP	Removable	1.75	11.4	18	8.6/4.5-4.3	24,98
	1800	115/230	56C	D13CP2PCR	\$423	DS-3FMP	No	1.35	10.8	18	4.6/2.3	25
	1800	115/208-230	56J	EU0334	\$280	DS-3FMP	Removable	1.35	10.6	12	8.3/4.1-4.2	24
1/2	3600	115/208-230	56C	EC0502	\$280	DS-3FMP	No	1.60	11.2	22	10.8/5.9-5.4	24,98
	3600	115/208-230	56J	EU0502	\$285	DS-3FMP	No	1.60	11.7	17	10.8/5.9-5.4	24,98
	3600	115/208-230	56J	EU0502B	\$290	DS-3FMP	Removable	1.60	11.6	18	10.4/5.1-5.2	24,98
	1800	115/230	56C	D12CP2PCR	\$497	DS-3FMP	No	1.25	10.9	22	5.9/3.0	25
	1800	115/230	56C	D12CPA2PCR	\$570	DS-3F	No	1.25	9.9	22	5.9/3.0	24
	1800	115/208-230	56C	EC0504B	\$456	DS-3FMP	Rigid	1.25	10.4	22	10.0/5.1-5.0	24
	1800	115/208-230	56J	EU0504	\$453	DS-3FMP	Removable	1.25	10.9	29	10.0/5.1-5.0	24
3/4	3600	115/230	56C	D34CPM1PCR	\$516	DS-3FMP	No	1.25	11.4	24	8.1/4.2	23
	3600	115/208-230	56C	D34CA1JCR	\$388	DS-3FMP	No	1.25	11.4	32	12.1/6.3-6.1	24,LA
	3600	115/208-230	56C	EC0752	\$350	DS-3FMP	No	1.50	11.9	18	12.8/7.0-6.4	24,98
	3600	115/208-230	56J	EU0752B	\$359	DS-3FMP	Removable	1.50	12.1	27	14.0/7.3-7.0	24,98
	3600	115/208-230	56J	EU0752	\$355	DS-3FMP	No	1.50	12.4	23	12.8/7.0-6.4	24,98
	1800	115/230	56C	D34CP2PCR	\$610	DS-3FMP	No	1.25	11.9	29	8.2/4.1	25
	1800	115/230	56C	D34CPA2PCR	\$690	DS-3FMP	No	1.25	13.0	29	8.2/4.1	24
	1800	115/208-230	56J	EU0754	\$553	DS-3FMP	No	1.25	11.9	29	8.2/4.1	25
1	3600	115/208-230	56C	EC1002	\$404	DS-3FMP	No	1.40	12.2	20	15.4/8.5-7.7	24,98
	3600	115/230	56C	D1CPA1PCR	\$560	DS-3FMP	No	1.25	12.9	29	11.5/5.5	24
	3600	115/208-230	56J	EU1002B	\$413	DS-3FMP	Removable	1.40	12.4	29	16.2/8.6-8.1	24,98
	3600	115/208-230	56J	EU1002	\$409	DS-3FMP	No	1.40	12.7	23	15.4/8.5-7.7	24,98
	1800	115/230	56C	D1CP2PCR	\$662	DS-3FMP	No	1.15	13.0	31	9.2/4.6	25
	1800	115/208-230	56C	EC1004B	\$615	DS-3FMP	Rigid	1.15	11.6	31	16.4/8.4-8.2	24

Note 24 Automatic Reset Thermal Protector Overload
 Note 25 Non-protected
 Note 98 50/60 Hertz Motor
 Note LA Limited Availability

BRAKEMOTORS
 GENERAL PURPOSE SINGLE PHASE
 HVAC
 WASHDOWN
 AGRICULTURE
 COMMERCIAL PUMP MOTORS
 CLOSE COUPLED PUMP MOTORS
 FIRE PUMP MOTORS
 POOL & SPA MOTORS
 RESIDENTIAL WATER PUMP
 ELEVATOR GATE & DOOR

Special Application Commercial Pump Single Phase Open Drip Proof (ODP) C-Face



(continued)

HP	RPM	Voltage	Frame	Catalog Number	List	Discount Symbol	Base (Feet)	SF	"C" Dim. (inches)	Ship Wt. (lbs)	Max Amps	Notes
1 1/2	3600	115/208-230	56C	EC1502	\$490	DS-3FMP	No	1.30	12.4	33	21.8/11.3-10.9	24,98
	3600	115/208-230	56J	EU1502	\$494	DS-3FMP	No	1.30	12.9	33	21.8/11.3-10.9	24,98
	3600	115/208-230	56J	EU1502B	\$501	DS-3FMP	Removable	1.30	12.9	35	21.8/11.3-10.9	24,98
	1800	115/230	56HC	D32CP2PCR	\$693	DS-3FMP	No	1.15	12.9	37	14.6/7.3	25
2	3600	115/208-230	56C	EC2002	\$618	DS-3FMP	No	1.20	12.4	32	22.2/12.2-11.1	18,24,98
	3600	115/208-230	56C	EC2002B	\$620	DS-3FMP	Rigid	1.20	12.4	33	22.2/12.2-11.1	18,24,98
	3600	115/208-230	56J	EU2002	\$619	DS-3FMP	No	1.20	12.9	32	22.2/12.2-11.1	18,24,98
	3600	115/208-230	56J	EU2002B	\$626	DS-3FMP	Removable	1.20	12.9	33	22.2/12.2-11.1	18,24,98
	1800	115/230	56C	D2CP2PCR	\$990	DS-3FMP	No	1.15	13.4	42	19.6/9.8	25
3	3600	208-230	56C	EC3002	\$700	DS-3FMP	No	1.15	12.9	37	15.7-14.2	18,24
	3600	208-230	56J	EU3002	\$705	DS-3FMP	No	1.15	13.4	37	15.7-14.2	18,24
	3600	208-230	56J	EU3002B	\$710	DS-3FMP	Removable	1.15	13.4	38	15.7-14.2	18,24

Note 18 Incorporates Run Capacitor
 Note 24 Automatic Reset Thermal Protector Overload
 Note 25 Non-protected
 Note 98 50/60 Hertz Motor
 Note LA Limited Availability